

VISIOAID®

(Schirmer Tear Test Strips)

Description:

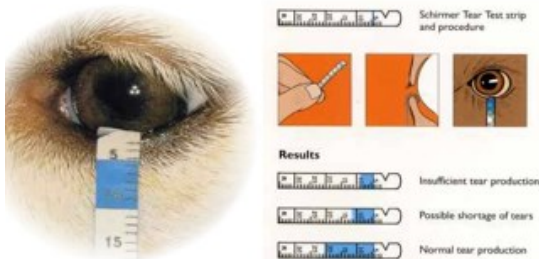
Schirmer Tear Test Strips are made of filter paper. This product has a calibrated scale printed on the strip, on which a color line made of fluorescent dye will co-migrate with the tear flow. An easier and more precise reading will be provided. Strips can be kept for result comparison before- and after-treatment.

Indications:

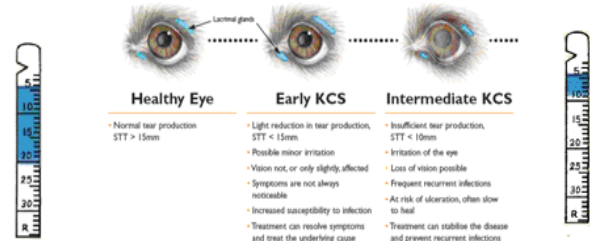
The Schirmer Tear Test (STT) is indicated to measure the rate of tear production. It should be used in the evaluation of conjunctivitis to diagnose tear deficiency as a contributing factor to ocular surface diseases including: Keratoconjunctivitis sicca (KCS), Pigmentary Keratitis, Indolent Corneal Ulcers, Exposure Keratitis and others. In addition, it should be used to assess lacrimal gland function prior to cataract surgery.

Directions for Use:

- Do not expose the dog's eye to any topical medication or any manipulation prior to performing the test.
- Place the dog's eye away from direct light, adequately resting the head. Open the strip sachet as indicated in the adjoining figures.
 - Peel off the sachet using the thumbs and the index finger of both hands
 - Pull open the sachet to about half its length
 - Gently remove the strip, holding the flat end
 - Insert the rounded end of the strip into the lower conjunctival sac, while the dog looks up, making sure that the strip is securely placed.
 - Place the strip at least 30 seconds to 2 minutes. Remove the strip and refer to the graduated scale on the strip to record the distance of tear migration.



STT detection criterion



RESULT INTERPRETATION



- A test strip of a dog with normal tear production will stain the test strip up to at least the 15mm mark.
- If the color on the test strip reaches 10 to 14mm, the result is considered borderline.
- A dog is diagnosed with dry eye if the stain on the test strip only reaches 10 mm or less.
- Severe dry eye is diagnosed when the measurement reaches 5 mm or less.

After a dry eye diagnosis is made, a dog can be treated with artificial tear that corresponds with the severity of the condition.

Contraindications:

Contraindicated in dogs with ocular surface damage, inflammation or ulcers of cornea and conjunctiva.

Warnings and Precautions:

- Do prior to administration of topical anesthetic
- Remember there are three layers to the tear film, and Schirmer only measures the middle layer or aqueous layer, deficiency of the mucin layer (inner) or the lipid layer (outer) may also cause corneal irritation and opacity.
- For ophthalmic use in dogs only.

Interactions: None known

Adverse drug reactions:

This product is composed of paper and contains no biologically active ingredients and therefore does not pose a health hazard to dogs.

Presentation: 10 strips in a box

VETERINARY
NOR FOR HUMAN USE
FOR TREATMENT OF ANIMAL ONLY
FOR EXTERNAL USE ONLY



SAVA HEALTHCARE LIMITED

Plot No. 507-B to 512 GIDC Estate,
Wadhwan City – 363035, Surendranagar,
Gujarat, India

www.savavet.com